



## Het uniseks t-shirt met lange mouwen

Normale pasvorm

XXS > 3XL

180 GSM

### Details

- Ingezette mouw
- 1x1 rib bij nekraag
- Dubbele naald topstitch bij mouwmanchet en zoom
- Binnenkant achter nekband in zelfde stof

### Samenstelling

Shell - Enkelvoudige jersey  
100% Gesponnen en gekamd biologisch katoen - 180 GSM  
Gewassen stof

### Verzorging

Wash similar colours together, no ironing on print, wash and iron inside out.



### Land van herkomst

Weaving : Bangladesh  
Dyeing : Bangladesh  
Assembly : Bangladesh



Original  
Certified by Control Union  
© 2022 Stanley



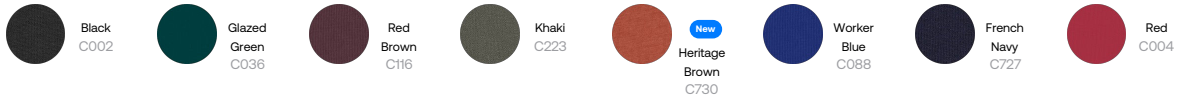
www.oeko-tex.com



Whites



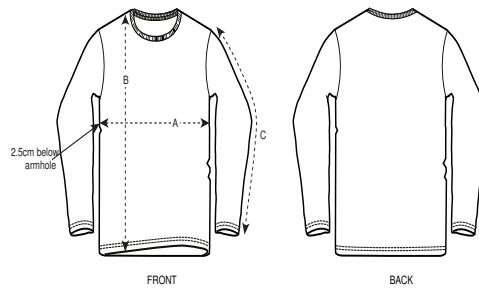
Colors



Essential Heathers



Maattabel



Sizes		XXS	XS	S	M	L	XL	XXL	3XL
A	Half Chest	45.5	47.5	49.5	53.5	56.5	59.5	63.5	67.5
B	Body Length	62	65	69	73	75	77	79	81
C	Sleeve Length	60.5	61.5	63	64.5	65	65.5	66	66.5

Verpakking

Sizes		XXS	XS	S	M	L	XL	XXL	3XL
	Pieces/bag	5	5	5	5	5	5	5	5
	Pieces/box	25	50	50	50	50	50	50	25