



La maglietta a maniche lunghe da donna

Vestibilità media

XS > XXL

180 GSM

Dettagli

- Manica montata
- Costina 1x1 sul colletto
- Cuciture strette a doppio ago su polsino delle maniche e orlo
- Nastro interno al collo in tessuto

Composizione

Shell - Jersey
100% cotone biologico filato e pettinato - 180 GSM
Fabric washed

Cura

Wash similar colours together, no ironing on print, wash and iron inside out.



Paese di origine

Weaving : Bangladesh
Dyeing : Bangladesh
Assembly : Bangladesh



Original
Certified by Control Union
© 2022 Stanley



www.oeko-tex.com



Whites



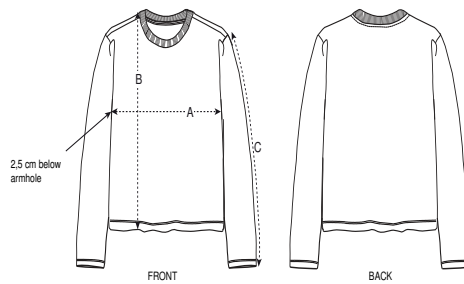
Colors



Essential Heathers



Guida alle taglie



Sizes		XS	S	M	L	XL	XXL
A	Half Chest	45	48	51	54	57	61
B	Body Length	56.5	59.5	61.5	63.5	65.5	67.5
C	Sleeve Length	58.5	60	61.5	63	64.5	64.5

Imballaggio

Sizes		XS	S	M	L	XL	XXL
	Pieces/bag	5	5	5	5	5	5
	Pieces/box	50	50	50	50	50	50