



DONNA MAGLIETTE
STTW172 - STELLA MUSER

La t-shirt iconica da donna

Vestibilità media

- Maniche cucite
- Costina 1x1 sul colletto
- Nastro collo interno in tessuto principale
- Cucitura a punto doppio stretta al polsino e all'orlo

Shell : Jersey , 100% cotone biologico filato e pettinato , Fabric washed , 180 GSM

WHITES



COLORS



ESSENTIAL

HEATHERS



SPECIAL

HEATHERS



Printing Specifications

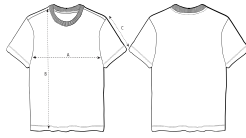
Certifications & memberships



Wash Instructions

Wash similar colours together, no ironing on print, wash and iron inside out.





SIZES	XS	S	M	L	XL	XXL
A Half Chest	45	48	51	54	57	61
B Body Length	56.5	59.5	61.5	63.5	65.5	67.5
C Sleeve Length	18	18.5	19	19.5	20	20.5

PACKING

SIZES	XS	S	M	L	XL	XXL
PCS/BAG	5	5	5	5	5	5
PCS/BOX	100	100	100	100	100	100