



## La maglietta a maniche lunghe unisex

Vestibilità media

XXS > 3XL

180 GSM

### Dettagli

- Manica montata
- Costina 1x1 sul colletto
- Cucitura a doppio ago su polsino delle maniche e orlo
- Nastro interno al collo in tessuto

### Composizione

Shell - Jersey  
100% cotone biologico filato e pettinato - 180 GSM  
Fabric washed

### Cura

Wash similar colours together, no ironing on print, wash and iron inside out.



### Paese di origine

Weaving : Bangladesh  
Dyeing : Bangladesh  
Assembly : Bangladesh



Original  
Certified by Control Union  
© 2022 Stanley



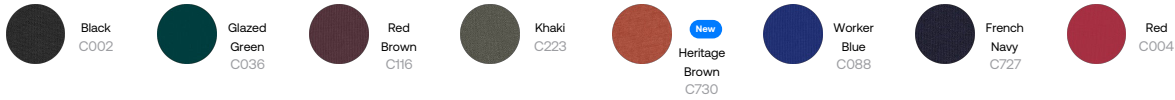
www.oeko-tex.com



Whites



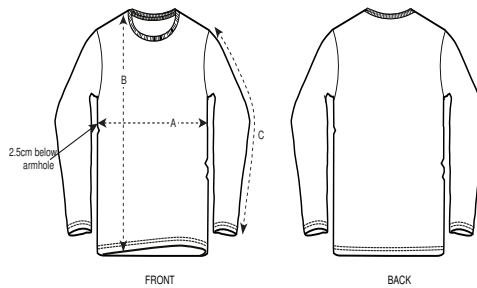
Colors



Essential Heathers



Guida alle taglie



Sizes		XXS	XS	S	M	L	XL	XXL	3XL
A	Half Chest	45.5	47.5	49.5	53.5	56.5	59.5	63.5	67.5
B	Body Length	62	65	69	73	75	77	79	81
C	Sleeve Length	60.5	61.5	63	64.5	65	65.5	66	66.5

Imballaggio

Sizes		XXS	XS	S	M	L	XL	XXL	3XL
	Pieces/bag	5	5	5	5	5	5	5	5
	Pieces/box	25	50	50	50	50	50	50	25