



## La felpa con scollo a crew oversized da donna

Oversize

S > L

300 GSM

### Dettagli

- Maniche montate
- Spalle scese
- Costine 1x1 su colletto, orli delle maniche e orlo inferiore
- Cuciture con doppio ago su tutte le cuciture
- Nastro gros grain interno al collo
- Mezzaluna interna in tessuto

### Composizione

Shell - Felpa garzata  
100% cotone biologico filato e pettinato - 300 GSM  
Fabric washed

### Cura

Wash similar colours together, no ironing on print, wash and iron inside out.



### Paese di origine

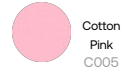
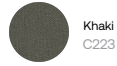
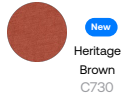
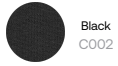
Weaving : Bangladesh  
Dyeing : Bangladesh  
Assembly : Bangladesh



Whites



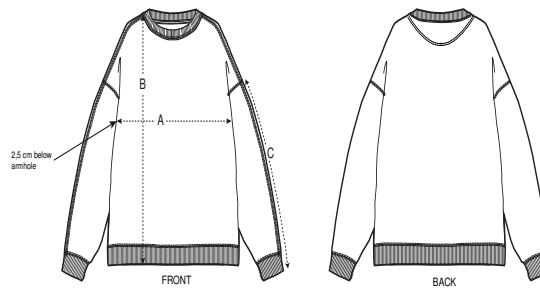
Colors



Essential Heathers



Guida alle taglie



Sizes		S	M	L
A	Half Chest	57.5	63.5	69.5
B	Body Length	70	73	76
C	Sleeve Length	54	57	60

Imballaggio

Sizes	S	M	L
Pieces/bag	5	5	5
Pieces/box	20	20	20