



La felpa con maniche raglan da donna

Vestibilità media

XS > XXL

300 GSM

Dettagli

- Maniche raglan
- Costine 2x1 su colletto, polsini delle maniche e orlo inferiore
- Cuciture flatlock a tre aghi su collo, maniche, cuciture laterali e mezzaluna
- Cuciture a doppio ago su orlo inferiore e polsini delle maniche
- Nastro gros grain interno al collo
- Mezzaluna interna in tessuto

Composizione

Shell - Felpa non garzata
 100% cotone biologico filato e pettinato - 300 GSM
 Fabric washed

Cura

Wash similar colours together, no ironing on print, wash and iron inside out.



Paese di origine

Weaving : Bangladesh
 Dyeing : Bangladesh
 Assembly : Bangladesh



Original
 Certified by Control Union
 of Excellence



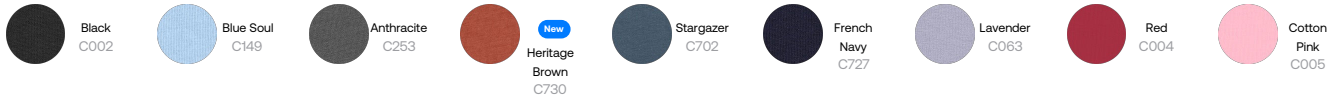
www.oeko-tex.com



Whites



Colors



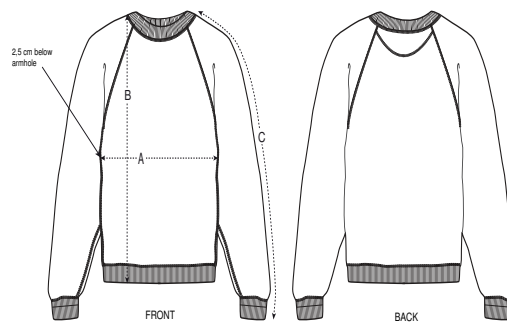
Essential Heathers



Special Heathers



Guida alle taglie



Sizes		XS	S	M	L	XL	XXL
A	Half Chest	49	52	55	58	61	65
B	Body Length	58	61	63	65	67	69
C	Sleeve Length	67.8	69	70.5	71.8	73	74.3

Imballaggio

Sizes		XS	S	M	L	XL	XXL
	Pieces/bag	5	5	5	5	5	5
	Pieces/box	20	20	20	20	20	20