



La giacca in pile da donna

Aderente

XS > XXL

300 GSM

Dettagli

- Maniche montate
- Finitura elastica su bordo del collo, polsini e orlo
- Anello gros grain interno al collo
- Cerniera in nylon con cursore in metallo e terminale del cordino
- Tessuto spazzolato con finitura anti-pilling interno ed esterno
- Tasche laterali profilate con apertura a zip
- Nastro interno al collo in poliestere riciclato

Composizione

Shell - Polar Fleece
 100% poliestere riciclato - 300 GSM
 Brushed

Cura

Wash similar colours together. No ironing. Close all snaps before washing. Line dry.



Made with 100% GRS recycled polyester
 Certified by Control Union
 PT/AN/2524



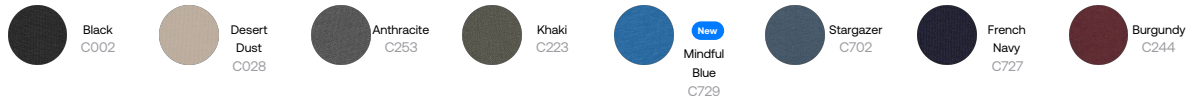
www.oeko-tex.com



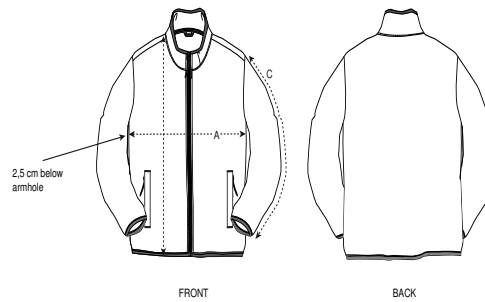
Paese di origine

Weaving : China
 Dyeing : China
 Assembly : Bangladesh

Colors



Guida alle taglie



Sizes		XS	S	M	L	XL	XXL
A	Half Chest	47	50	53	56	60	64
B	Body Length	61	64	66	68	70	72
C	Sleeve Length	59.5	61	62.5	64	65.5	65.5

Imballaggio

Sizes		XS	S	M	L	XL	XXL
	Pieces/bag	5	5	5	5	5	5
	Pieces/box	10	10	10	10	10	10