

HOMMES T-SHIRT

STTM606 - STANLEY ADORER



Le T-shirt léger homme

Coupe ajustée

- Manches montées
- Biais en côte 1x1 au col
- Surpiqûre double large en bas de manches et bas de corps

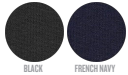
Shell : Jersey simple, 100% coton biologique filé et peigné, Tissu lavé, 140 GSM

WHITES



WHITE

COLORS



BLACK

FRENCH NAVY

ESSENTIAL HEATHERS



HEATHER GREY

Printing Specifications

Convient à toute technique d'impression. Visitez notre site web pour plus d'informations.

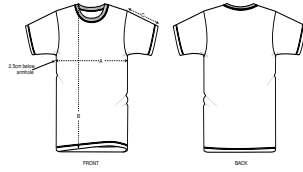
Certifications & memberships



Wash Instructions

Wash similar colours together, do not iron on print, wash and iron inside out.





SIZES		S	M	L	XL	XXL
A	Half Chest	47	50	53	56	59
B	Body Length	70	72	74	76	78
C	Sleeve Length	19.5	19.5	20.5	20.5	21.5

PACKING

SIZES	S	M	L	XL	XXL
PCS/BAG	5	5	5	5	5
PCS/BOX	100	100	100	100	100