



COLORS



MEN T-SHIRTS
STANLEY SHUFFLER DENIM



STTM561

The men's denim long sleeve t-shirt

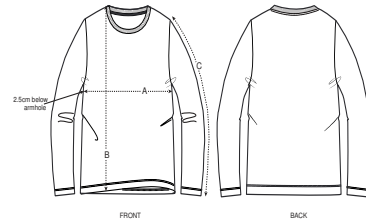
Single Jersey
100% Organic ring-spun combed cotton
155 GSM

- Set-in sleeve
- 1x1 rib at neck collar
- Inside back neck tape in self fabric
- Sleeve hem and bottom hem with wide double topstitch
- Faded look on all seams due to garment washing
- Indigo yarn dyed product, each garment may vary in appearance, colour may bleed, follow our care label
- Read carefully print recommendations

MEDIUM FIT

S	M	L	XL	XXL
---	---	---	----	-----

Size guide

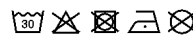


SIZES		S	M	L	XL	XXL
A	Half Chest	49	52	55	58	61
B	Body Length	70	72	74	76	78
C	Sleeve Length	64	65	66	67	68

Printing Specifications

For suitable print techniques, please download our printing guide

Wash and dry separately, colour bleeds, wash and iron inside out, do not iron on print. This garment is an indigo dyed item. Each garment may vary in appearance. Denim washed effect will become stronger over time. Colour may transfer by rubbing onto light coloured materials. Use mild detergent which contains no bleach.



STANLEY/STELLA