



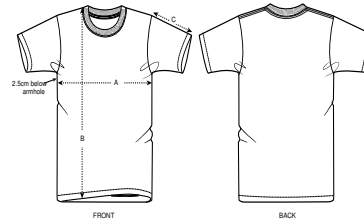
MEN T-SHIRTS
STTM527 - STANLEY TRIMS



The men's high collar t-shirt

Single Jersey
 100% Organic ring-spun combed cotton
 Medium Fit
 155 GSM

- Set-in sleeve
- Dropped shoulder
- Wide 1x1 rib neck collar
- Inside back neck tape in self fabric
- Sleeve hem and bottom hem with single topstitch



| SIZES | | S | M | L | XL | XXL |
|-------|---------------|------|------|------|------|------|
| A | Half Chest | 49 | 52 | 55 | 58 | 61 |
| B | Body Length | 69.5 | 71.5 | 73.5 | 75.5 | 77.5 |
| C | Sleeve Length | 20.5 | 20.5 | 21.5 | 21.5 | 22.5 |

WHITES



COLORS



Printing Specifications

For suitable print techniques, please download our printing guide

Certifications & memberships



Wash Instructions

Wash similar colours together, do not iron on print, wash and iron inside out.

