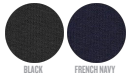




### COLORS



### ESSENTIAL HEATHERS



### SPECIAL HEATHERS



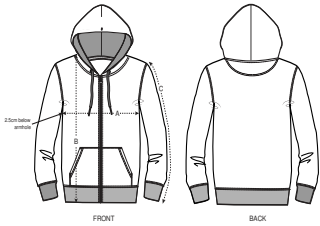
## WOMEN BUTTON FRONT SWEATSHIRT STSWI49 - STELLA EDITOR



### The iconic women's zip-thru hoodie sweatshirt

#### Fitted

- Set-in sleeve
- Double layered hood in self fabric
- Round drawcords in matching body colour with metal tipping
- Herringbone tape at inside back neck and at inside of zipper
- Metal zipper and eyelets
- Self fabric half moon at back neck
- Single needle topstitch at neckline
- 1x1 rib at sleeve hem and bottom hem
- Armhole, sleeve hem and bottom hem with twin needle topstitch.
- Kangaroo pocket with wide double topstitch



SIZES		XS	S	M	L	XL	XXL
A	Half Chest	44.5	47	50	53	56	59
B	Body Length	61	63	65	67	68	69
C	Sleeve Length	63.5	63.5	64.5	65	65.5	65.5

Some sizes are only available on a limited number of colours. Please check our webshop for latest information

#### Combo options



#### Printing Specifications

For suitable print techniques, please download our printing guide

#### Certifications & memberships



#### Wash Instructions

Wash similar colours together, do not iron on print, wash and iron inside out.



Shell : Brushed Sweatshirt , 85% Organic ring-spun combed cotton , 15% Recycled polyester , Fabric washed , Light sueded ,  
350 GSM