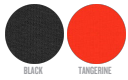




COLORS



WOMEN ZIP-THRU SWEATSHIRTS
STELLA BOXER



STSW133

The women's cropped zip-thru hoodie sweatshirt

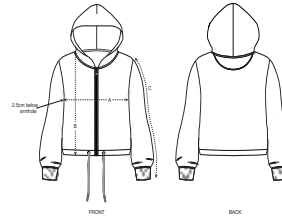
Brushed Sweatshirt
85% Organic ring-spun combed cotton, 15% Recycled polyester
300 GSM

- Set-in sleeve
- Dropped Shoulder
- Lined hood in single jersey
- Inside herringbone back neck tape
- Self fabric half moon at back neck
- Metal zipper and eyelets
- Single needle topstitch at neckline and bottom hem
- 1x1 rib at sleeve hem with twin needle topstitch
- Round drawcords at bottom hem in matching body colour with metal tipping

MEDIUM FIT

XS	S	M	L	XL
----	---	---	---	----

Size guide

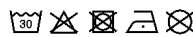


SIZES		XS	S	M	L	XL
A	Half Chest	50.5	53	56	59	62
B	Body Length	55	57	59	61	62
C	Sleeve Length	56	56	57	57.5	58

Printing Specifications

For suitable print techniques, please download our printing guide

Wash similar colours together, do not iron on print, wash and iron inside out. Close zip before washing



STANLEY/STELLA