



WOMEN HOODIE SWEATSHIRTS
STELLA BOWER



STSW132

The women's cropped hoodie sweatshirt

Brushed Sweatshirt
85% Organic ring-spun combed cotton, 15% Recycled polyester
300 GSM

- Raglan sleeve
- Lined hood in single jersey
- Inside herringbone back neck tape
- Self fabric half moon at back neck
- Single needle topstitch at neckline and bottom hem
- 1x1 rib at sleeve hem with twin needle topstitch
- Round drawcords at bottom hem in matching body colour with metal tipping
- Metal eyelets

WHITES



NATURAL RAW

COLORS



BLACK NAVY YELLOW INDIGO INK GREY

ESSENTIAL
HEATHERS

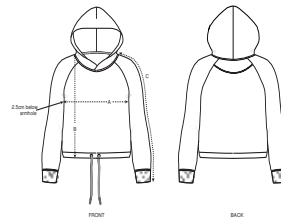


HEATHER GREY CINNAMON HEATHER PINK

MEDIUM FIT

XS	S	M	L	XL
----	---	---	---	----

Size guide

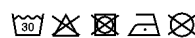


SIZES		XS	S	M	L	XL
A	Half Chest	50.5	53	56	59	62
B	Body Length	55	57	59	61	62
C	Sleeve Length	67.8	69	70.5	71.8	73

Printing Specifications

For suitable print techniques, please download our printing guide

Wash similar colours together, do not iron on print, wash and iron inside out.



STANLEY/STELLA