



## The oversized crew neck sweatshirt

Oversized

XXS > 3XL

350 GSM

### Details

- Set-in sleeves
- 2x1 Rib at collar, sleeve cuffs and bottom hem
- Double needles topstitches on all seams
- Inside herringbone back neck tape
- Self fabric half moon at back neck

### Composition

Shell - Brushed  
 100% Cotton - Organic Ring Spun Combed - 350 GSM  
 Fabric washed

### Care

Wash similar colours together, no ironing on print, wash and iron inside out.



### Country of origin

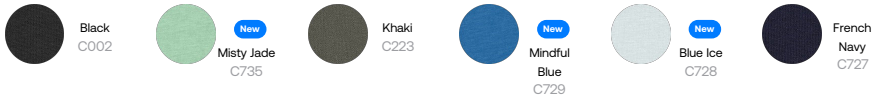
Weaving : Bangladesh  
 Dyeing : Bangladesh  
 Assembly : Bangladesh



Whites



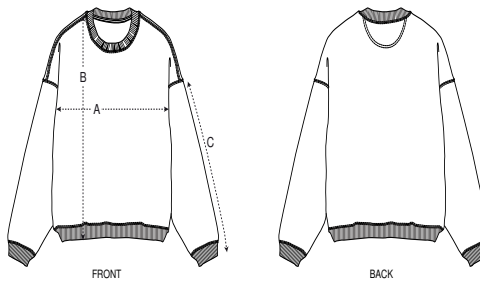
Colors



Essential Heathers



Size Guide



| Sizes |               | XXS  | XS   | S    | M    | L    | XL   | XXL  | 3XL  |
|-------|---------------|------|------|------|------|------|------|------|------|
| A     | Half Chest    | 59.5 | 61.5 | 63.5 | 67.5 | 70.5 | 73.5 | 77.5 | 81.5 |
| B     | Body Length   | 62   | 65   | 69   | 73   | 75   | 77   | 79   | 81   |
| C     | Sleeve Length | 51   | 53   | 57   | 59   | 61   | 61.5 | 62   | 62   |

Packing

| Sizes |            | XXS | XS | S  | M  | L  | XL | XXL | 3XL |
|-------|------------|-----|----|----|----|----|----|-----|-----|
|       | Pieces/bag | 1   | 1  | 1  | 1  | 1  | 1  | 1   | 1   |
|       | Pieces/box | 10  | 20 | 20 | 20 | 20 | 20 | 20  | 10  |