



The men's quarter zip sweatshirt

Fitted

XS XXL

300 GSM

Details

- Set-in sleeve
- Neck collar in self fabric
- Inside herringbone back neck tape
- Self fabric half moon at back neck
- Quarter zip at center front with inside facing
- 1x1 rib at sleeve hem and bottom hem
- Armhole, sleeve hem and bottom hem with twin needle topstitch

Composition

Shell - Brushed  
 85% Cotton - Organic Ring Spun Combed , 15% Polyester - Recycled - 300 GSM  
 Fabric washed , Light sueded

Care

Wash similar colours together, do not iron on print,  
 wash and iron inside out. Close zip before washing.



Country of origin

Weaving : Bangladesh  
 Dyeing : Bangladesh  
 Assembly : Bangladesh



Whites



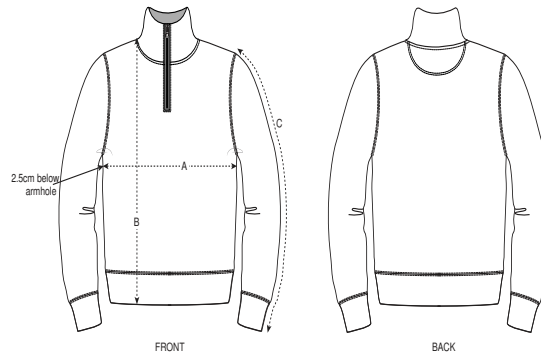
Colors



Essential Heathers



Size Guide



Sizes		XS	S	M	L	XL	XXL
A	Half Chest	48	50.5	53	56	59	62
B	Body Length	68	70	72	74	76	78
C	Sleeve Length	63	64.5	66	67.5	69	70.5

Packing

Sizes		XS	S	M	L	XL	XXL
	Pieces/bag	5	5	5	5	5	5
	Pieces/box	20	20	20	20	20	20