



The women's polo

Fitted

XS XXL

200 GSM

Details

- Set-in sleeve
- Flat knit rib on collar and sleeve hem
- Inside heavy single jersey back neck tape
- Front placket with 2 buttons in matching body colour
- Slit at side seams with heavy single jersey facing
- Single needle topstitch at shoulder seams
- Bottom hem with narrow double needle topstitch

Composition

Shell - Piqué  
 5% Elastane , 95% Cotton - Organic Ring Spun Combed - 200 GSM  
 Fabric washed

Care

Wash similar colours together, no ironing on print,  
 wash and iron inside out.



Country of origin

Weaving : Bangladesh  
 Dyeing : Bangladesh  
 Assembly : Bangladesh



Whites



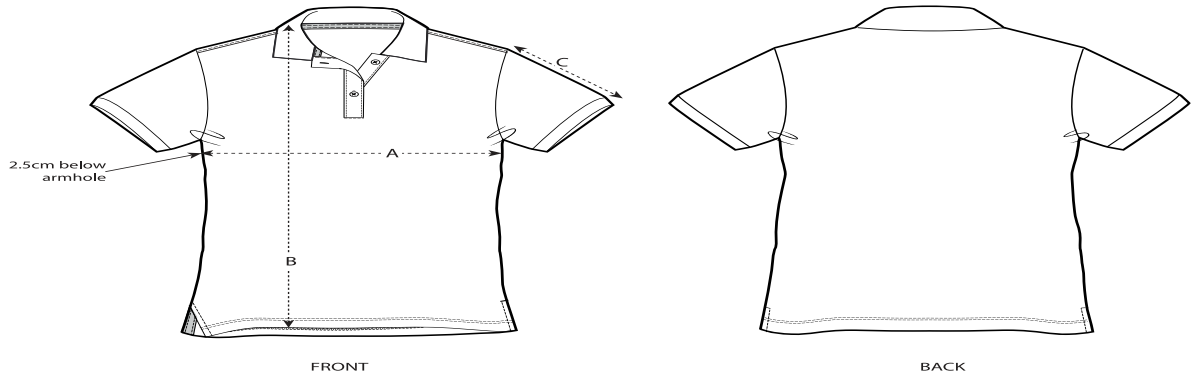
Colors



Essential Heathers



Size Guide



Sizes		XS	S	M	L	XL	XXL
A	Half Chest	41	43.5	46.5	49.5	52.5	55.5
B	Body Length	61	63	65	67	68	68
C	Sleeve Length	17.5	17.5	18.5	18.5	19.5	19.5

Packing

Sizes		XS	S	M	L	XL	XXL
	Pieces/bag	5	5	5	5	5	5
	Pieces/box	50	50	50	50	50	50