



WOMEN POLOS  
**STELLA DEVOTER**



STPW034

**The women's polo**

Piqué  
95% Organic ring-spun combed cotton, 5% Elastane  
200 GSM

- Set-in sleeve
- Flat knit rib on collar and sleeve hem
- Inside herringbone back neck tape
- Front placket with 2 buttons in matching body colour
- Slit at side seams with herringbone facing
- Single needle topstitch at shoulder seams
- Bottom hem with narrow double topstitch
- Back length is longer than front length

WHITES



COLORS



ESSENTIAL  
HEATHERS



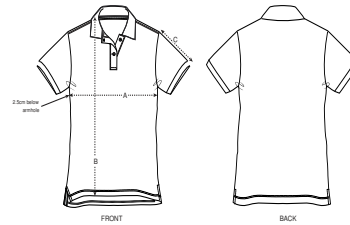
*\*Size available on limited number of colours*

*Please check our webshop for latest information*

MEDIUM FIT

XS	S	M	L	XL	XXL*
----	---	---	---	----	------

Size guide



SIZES		XS	S	M	L	XL	XXL
A	Half Chest	41	43,5	46,5	49,5	52,5	55,5
B	Body Length	62	64	66	68	69	69
C	Sleeve Length	15	15	16	16	17	17

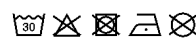
Combo options



Printing Specifications

Fits all kinds of print techniques. Please download our printing guide for details.

Wash similar colours together, do not iron on print, wash and iron inside out.



**STANLEY/STELLA**