



WOMEN / POLOS
STELLA PLAYS



STPW029

Piqué polo

Piqué
95% Organic ring-spun Combed Cotton, 5% Elastane
200 GSM

- Set-in sleeve
- Flat knit rib on collar and sleeve hem (raised line on rib edge)
- Inside herringbone back neck tape
- Narrow front placket with 5 buttons in matching body colour
- Inside placket with thin sateen tape
- Slit at side seams
- Single topstitch at side seams and armholes
- Bottom hem with narrow double topstitch
- Back length longer than front length

FITTED

XS S M L XL XXL

Size guide

WHITES



WHITE

COLORS



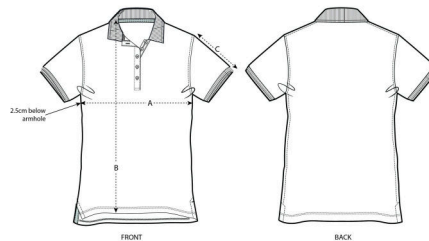
BLACK



NAVY



RED



SIZES		XS	S	M	L	XL	XXL
A	Half Chest	38.5	41	44	47	50	53
B	Body Length	61.4	63.4	65.4	67.4	68.4	68.4
C	Sleeve Length	13.5	13.5	14.5	14.5	15.5	15.5

Combo options



Printing Specifications

Fits all kind of printing techniques. For more information, please visit our website.

Wash similar colours together, do not iron on print, wash and iron inside out.



STANLEY/STELLA