



MEN POLOS
STPM563-STANLEY DEDICATOR

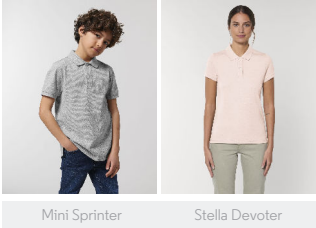


The iconic men's polo

Medium Fit

- Set-in sleeve
- Flat knit rib on collar and sleeve hem
- Inside herringbone back neck tape
- Front placket with 2 buttons in matching body colour
- Slit at side seams with herringbone facing
- Single needle topstitch at shoulder seams
- Bottom hem with wide double topstitch
- Back length is longer than front length

Combo options



WHITES



COLORS



**ESSENTIAL
HEATHERS**



Shell : Piqué , 100% Organic ring-spun combed cotton , Fabric washed , 230 GSM

Printing Specifications

For suitable print techniques, please download our printing guide

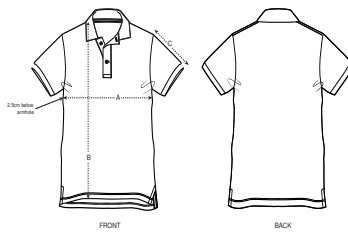
Certifications & memberships



Wash Instructions

Wash similar colours together, do not iron on print, wash and iron inside out.





SIZES		S	M	L	XL	XXL	3XL	4XL
A	Half Chest	49	52	55	58	61	64	72
B	Body Length	70	72	74	76	78	81	82
C	Sleeve Length	22.5	22.5	23.5	23.5	24.5	25.5	26.5

Some sizes are only available on a limited number of colours. Please check our webshop for latest information