



COLORS



WOMEN DRESSES
STELLA TWISTER DIP DYE



STDW160

The women's dip dyed oversized t-shirt dress

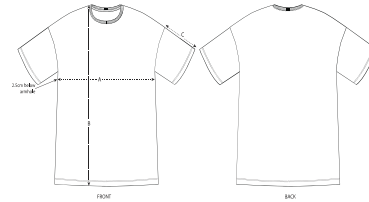
Single Jersey
100% Organic ring-spun combed cotton
155 GSM

- Set-in sleeve
- Dropped shoulder
- 1x1 rib at neck collar
- Inside back neck tape in self fabric
- Sleeve hem and bottom hem with narrow double needle topstitch
- Dip dyed product, each garment may vary in appearance, colour may bleed, follow our care label
- Read carefully print recommendations

RELAXED FIT

S	M	L
---	---	---

Size guide

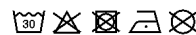


SIZES		S	M	L
A	Half Chest	53	58	64
B	Body Length	82	86	90
C	Sleeve Length	20	21	22

Printing Specifications

For suitable print techniques, please download our printing guide

Wash and dry separately, colour bleeds, do not iron on print, wash and iron inside out. This garment is a dip dyed item. Each garment may vary in appearance. Colour effect may fade over time. Colour may transfer by rubbing onto light coloured materials. Use mild detergent which contains no bleach.



STANLEY/STELLA