



WOMEN SWEAT DRESSES  
**STELLA STREETER**



STDW143

**The women's hoodie dress**

Brushed Hoodie Dress  
85% Organic ring-spun combed cotton, 15% Recycled polyester  
300 GSM

- Set-in sleeve
- Double layered hood in self fabric
- Round drawcords in matching body colour with metal tipping
- Metal eyelets
- Inside herringbone back neck tape
- Self fabric half moon at back neck
- Single needle topstitch at neckline and along hood opening
- 1x1 rib at sleeve hem
- Armhole, sleeve hem and bottom hem with twin needle topstitch
- Kangaroo pocket at front
- Slits at side seam

COLORS



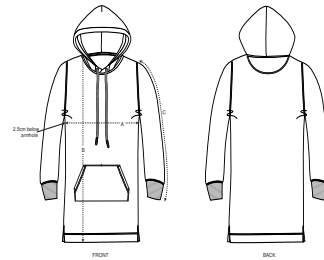
ESSENTIAL  
HEATHERS



MEDIUM FIT

XS	S	M	L	XL
----	---	---	---	----

Size guide

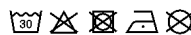


SIZES		XS	S	M	L	XL
A	Half Chest	49	51.5	54.5	57.5	60.5
B	Body Length	83.5	85.5	87.5	89.5	90.5
C	Sleeve Length	59.5	60.5	61.5	62	62.5

Printing Specifications

For suitable print techniques, please download our printing guide

Wash similar colours together, do not iron on print, wash and iron inside out.



**STANLEY/STELLA**