



WOMEN SWEAT DRESSES
STELLA KICKS



STDW139

The women's crew neck dress

Terry Sweatshirt
85% Organic ring-spun combed cotton, 15% Polyester
300 GSM

- Set-in sleeve
- 1x1 rib at neck collar, sleeve hem and bottom hem
- Inside back neck tape in single jersey
- Self fabric halfmoon at back neck
- Flatlock topstitch on all seams
- CERTIFICATION/STOCK: Based on stock levels, some quantities may be GOTS

COLORS



ESSENTIAL
HEATHERS



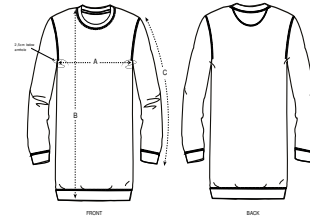
SPECIAL
HEATHERS



FITTED

XS	S	M	L	XL
----	---	---	---	----

Size guide

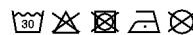


SIZES		XS	S	M	L	XL
A	Half Chest	46	48.5	51.5	54.5	57.5
B	Body Length	86	88	90	92	93
C	Sleeve Length	61	61	62	62.5	63

Printing Specifications

For suitable print techniques, please download our printing guide

Wash similar colours together, do not iron on print, wash and iron inside out.



STANLEY/STELLA