



COLORS



WOMEN JOGGING PANTS  
**STELLA TRACER DENIM**



STBW312

**The women's denim jogger pants**

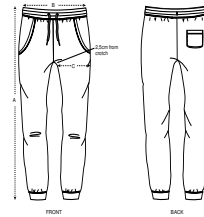
Terry Jogger Pants  
85% Organic ring-spun combed cotton, 15% Recycled polyester  
300 GSM

- Self fabric waistband
- Round drawcords in matching body colour with metal tipping
- Metal eyelets
- Pocket lining in single jersey
- Patch pocket at back
- 1x1 rib at bottom leg hem
- Waistband, pocket opening, and leg cuff with twin needle topstitch
- Faded look on all seams due to garment washing
- Indigo yarn dyed product, each garment may vary in appearance, colour may bleed, follow our care label
- Read carefully print recommendations

FITTED

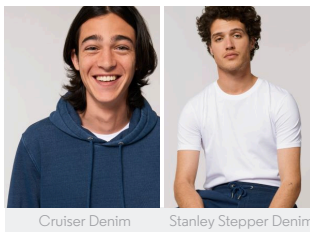
|    |   |   |   |    |
|----|---|---|---|----|
| XS | S | M | L | XL |
|----|---|---|---|----|

Size guide



| SIZES |            | XS   | S    | M    | L   | XL   |
|-------|------------|------|------|------|-----|------|
| A     | Waist      | 38   | 40   | 42.5 | 45  | 47.5 |
| B     | Leg Length | 96   | 98   | 100  | 101 | 102  |
| C     | Tight      | 25.8 | 26.5 | 27.5 | 29  | 30.5 |

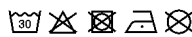
Combo options



Printing Specifications

For suitable print techniques, please download our printing guide

Wash and dry separately, do not bleach, wash and iron inside out, do not iron on print. This garment is an indigo dyed item. Each garment may vary in appearance. Denim washed effect will become stronger over time. Colour may transfer by rubbing onto light coloured materials. Use mild detergent which contains no bleach.



**STANLEY/STELLA**