



MEN JOGGING PANTS  
**STANLEY MOVER**



STBM569

**The men's jogger pants**

Brushed Jogger Pants  
85% Organic ring-spun combed cotton, 15% Recycled polyester  
300 GSM

- 1x1 rib waistband
- Round drawcords in matching body colour with metal tipping
- Metal eyelets
- Pocket lining in single jersey
- Patch pocket at back
- 1x1 rib at bottom leg hem
- Waistband, pocket opening, rise seams, and leg cuff with twin needle topstitch

COLORS



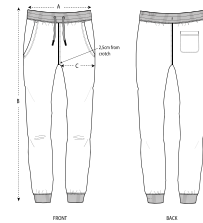
ESSENTIAL  
HEATHERS



MEDIUM FIT

S	M	L	XL	XXL
---	---	---	----	-----

Size guide



SIZES		XS	S	M	L	XL	XXL
A	Waist	34	37	40	43	46	49
B	Leg Length	100	102	104	106	108	110
C	Tight	28	29,2	30	31	32,5	34

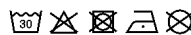
Combo options



Printing Specifications

Fits all kinds of print techniques. Please download our printing guide for details.

Wash similar colours together, do not iron on print, wash and iron inside out.



**STANLEY/STELLA**